

**EN** - For pricing and availability in your local country please visit one of the below links:

**DE** - Informationen zu Preisen und Verfügbarkeit in Ihrem Land erhalten Sie über die unten aufgeführten Links:

**FR** - Pour connaître les tarifs et la disponibilité dans votre pays, cliquez sur l'un des liens suivants:

[RM 805 024](#)

[RM805024](#)

[RM805012](#)

[RM809024](#)

[RM805730](#)

[RM805615](#)

**EN**  
This Datasheet is presented by  
the manufacturer

**DE**  
Dieses Datenblatt wird vom  
Hersteller bereitgestellt

**FR**  
Cette fiche technique est  
présentée par le fabricant

**Power Relay RM 8**

- 2 pole 25 A, 2 form C (2 CO) contacts
- DC or AC coil
- Mechanical indicator
- Push-to-test button
- Chassis or DIN rail mount

Typical applications  
Cleaning equipment, heating and cooling equipment.



**Approvals**

VDE Cert. No. 40003144, UL E214025,  
Technical data of approved types on request.

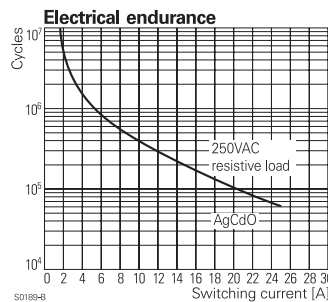
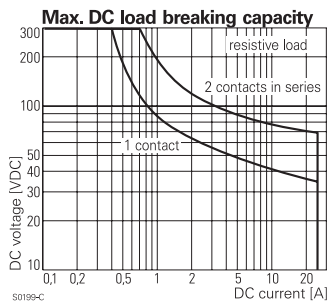
**Contact Data**

Contact arrangement	2 form C (CO)
Rated voltage	400VAC
Max. switching voltage	400VAC
Rated current	25A
Limiting making current, 20ms max.	60A
Switching power	6000VA
Contact material	AgCdO, AgNi90/10
Min. recommended contact load	24VDC/100mA
Frequency of operation, with/without load, DC coil	960/6000h <sup>-1</sup>
Operate/release time max., DC coil	15/10ms
Bounce time max., form A/form B, DC coil	4/6ms

**Contact ratings**

Type	Contact	Load	Cycles
<b>IEC 61810</b>			
RM8	C (CO)	25 A, 250 VAC, cosφ=1 35°C	10x10 <sup>3</sup>
RM82	C (CO)	25 A, 250 VAC, cosφ=1 DC-coil, 65°C	10x10 <sup>3</sup>
<b>UL 508</b>			
RM80	A/B (NO/NC)	25 A, 240 VAC, 1 phase per pole, general purpose 40°C	6x10 <sup>3</sup>
RM8	A/B (NO/NC)	25 A, 415 VAC, resistive, 45°C	10x10 <sup>3</sup>
RM82	A/B (NO/NC)	16 A, 415 VAC, resistive, 70°C	30x10 <sup>3</sup>
RM82	A/B (NO/NC)	240 VAC, 1 phase, 2HP, 50°C	6x10 <sup>3</sup>

Mechanical endurance 10x10<sup>6</sup> operations



**Coil Data**

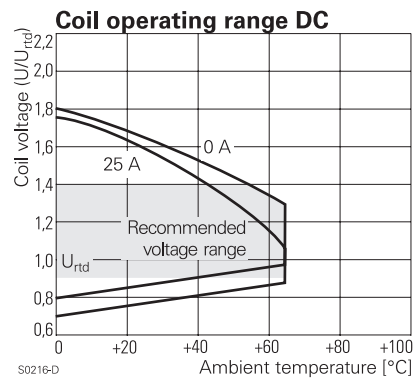
Coil voltage range	6 to 220VDC 6 to 400VAC
Operative range, IEC 61810	2
Coil insulation system according UL	class 130 (B)

**Coil versions, DC coil**

STD	Coil code		Rated voltage VDC	Coil resistance Ω±10% <sup>1)2)</sup>	Rated power W
	LED bipolar	PD <sup>3)</sup> LED+ PD <sup>3)</sup>			
006	L06	0A6 LA6	6	32	1.1
012	L12	0B2 LB2	12	110	1.3
024	L24	0C4 LC4	24	475	1.2
048	L48	0E8 LE8	48	2000	1.2
060	L60	0G0 LG0	60	2850	1.3
110	M10	1B0 MB0	110	10000 <sup>1)</sup>	1.2
221	N21	2C1 NC1	220	40000 <sup>2)</sup>	1.2

Operate voltage, DC coil 75% of rated coil voltage  
Release voltage, DC coil 10% of rated coil voltage

- 1) Coil resistance ±12%, 2) Coil resistance ±15%.
  - 3) Protection diode PD; standard polarity: +A1 / -A2.
- All figures are given for coil without pre-energization, at ambient temperature +23°C.



**Power Relay RM 8 (Continued)**

**Coil Data (continued)**

**Coil versions, AC coil**

Coil code	Rated voltage	Operate voltage	Release voltage	Coil resistance	Rated coil power	
STD	LED	50/60Hz	50/60Hz	$\Omega \pm 10\%^{(2)}$	50/60Hz	
		VAC	VAC	VAC	VA	
506	R06	6	4.8/5.1	1.8	4.7	2.86/2.36
512	R12	12	9.6/10.2	3.6	19.5	2.71/2.27
524	R24	24	19.2/20.4	7.2	80	2.62/2.00
548	R48	48	38.4/40.8	14.4	320	2.60/2.17
560	R60	60	48.0/51.0	18.0	500	2.62/2.20
615	S15	115	92.0/97.8	34.5	1850	2.65/2.22
730	T30	230	184.0/195.5	69.0	7500	2.69/ 2.26
900	V00	400	320.0/340.0	120.0	23500 <sup>(2)</sup>	2.61/2.20

2) Coil resistance  $\pm 15\%$ .

All figures are given for coil without pre-energization, at ambient temperature +23°C.

**Insulation Data**

Initial dielectric strength	
between open contacts	1500Vrms
between contact and coil	2500Vrms
between adjacent contacts	4000Vrms
Initial surge withstand voltage	
between contact and coil	5000V(1.2/50 $\mu$ s)
between adjacent contacts	6000V(1.2/50 $\mu$ s)
Clearance/creepage	
between contact and coil	$\geq 4.0/14.9$ mm
between adjacent contacts	$\geq 15.3/15.3$ mm
Material group of insulation parts	IIIa

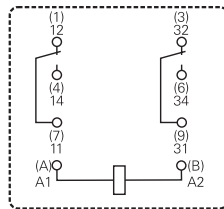
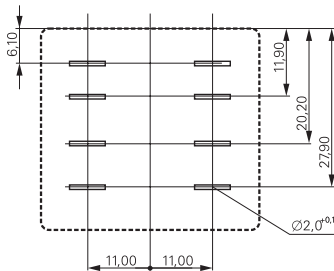
**Other Data**

Material compliance: EU RoHS/ELV, China RoHS, REACH, Halogen content refer to the Product Compliance Support Center at [www.te.com/customer-support/rohssupportcenter](http://www.te.com/customer-support/rohssupportcenter)

Ambient temperature	
for mounting/handling	-20 to +40°C
in operation	
DC coil	-40 to +65°C
AC coil	-40 to +40°C
16 A contact load	-40 to +70°C
Category of environmental protection	
IEC 61810	RT1 - dust protected
Vibration resistance (functional)	
form A (NO)/form B (NC)	10/5g, 30 to 150Hz
Terminal type	quick-connect
Cover retention, pull/push force	100/100N
Weight	81g
Packaging unit	10/25 pcs.

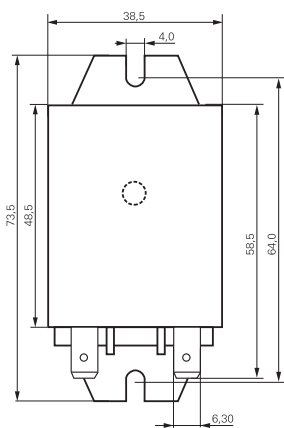
**Terminal assignment**

Bottom view on pins



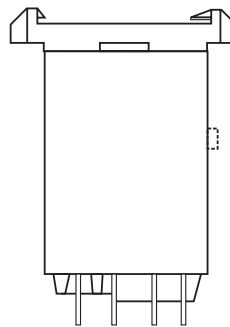
**Dimensions**

Cover with mounting brackets, 6.3mm quick connect terminals

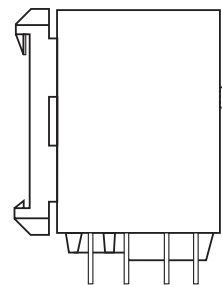


Cover with DIN-snap-on attachment

horizontal



vertical



**Power Relay RM 8** (Continued)

**Product code structure**

Typical product code **RM 8 0 9 024**

<b>Type</b>	RM Power relay RM8												
<b>Contact configuration</b>	8 2 form C contacts (2 CO), 25A												
<b>Version</b>	<table border="0"> <tr> <td>0</td><td>AgCdO, without test button</td> <td>3</td><td>AgCdO, with test button</td> </tr> <tr> <td>2</td><td>AgNi90/10, without test button</td> <td>7</td><td>AgNi90/10, with test button</td> </tr> </table>					0	AgCdO, without test button	3	AgCdO, with test button	2	AgNi90/10, without test button	7	AgNi90/10, with test button
0	AgCdO, without test button	3	AgCdO, with test button										
2	AgNi90/10, without test button	7	AgNi90/10, with test button										
<b>Enclosure</b>	<table border="0"> <tr> <td>5</td><td>cover with mounting brackets, 6.3mm quick connect terminals</td> </tr> <tr> <td>8</td><td>cover with DIN-snap-on attachment, horizontal, 6.3mm quick connect terminals</td> </tr> <tr> <td>9</td><td>cover with DIN-snap-on attachment, vertical, 6.3mm quick connect terminals</td> </tr> </table>					5	cover with mounting brackets, 6.3mm quick connect terminals	8	cover with DIN-snap-on attachment, horizontal, 6.3mm quick connect terminals	9	cover with DIN-snap-on attachment, vertical, 6.3mm quick connect terminals		
5	cover with mounting brackets, 6.3mm quick connect terminals												
8	cover with DIN-snap-on attachment, horizontal, 6.3mm quick connect terminals												
9	cover with DIN-snap-on attachment, vertical, 6.3mm quick connect terminals												
<b>Coil</b>	Coil code: please refer to coil versions table												

Product code	Contacts	Version	Enclosure	Coil	Coil	Part number
RM805024	2 form C, 2 CO contacts 25 A	Without test button	Mounting brackets quick c. 6.3 mm	DC-coil	24VDC	2-1393844-7
RM805524				AC-coil	24VAC	2-1393147-9
RM805615					115VAC	3-1393147-1
RM805730					230VAC	3-1393147-3
RM808024			DIN-snap-on horizontal	DC-coil	24VDC	2-1393844-9
RM808524				AC-coil	24VAC	3-1393147-7
RM808730					230VAC	5-1393149-7
RM809024			DIN-snap-on vertical	DC-coil	24VDC	5-1393149-8
RM809615				AC-coil	115VAC	3-1393147-8
RM809730					230VAC	3-1393147-9
RM835024		With test button	mounting brackets quick c. 6.3 mm	DC-coil	24VDC	4-1393147-1
RM835524	AC-coil			24VAC	4-1393147-3	
RM835615				115VAC	4-1393147-4	
RM835730					230VAC	4-1393147-6
RM838024			DIN-snap-on horizontal	DC-coil	24VDC	4-1393147-8
RM838524				AC-coil	24VAC	5-1393147-0
RM838730					230VAC	5-1393147-1
RM839024			DIN-snap-on vertical	DC-coil	24VDC	5-1393147-4
RM839524				AC-coil	24VAC	5-1393147-5
RM839730					230VAC	5-1393147-6

**EN** - For pricing and availability in your local country please visit one of the below links:

**DE** - Informationen zu Preisen und Verfügbarkeit in Ihrem Land erhalten Sie über die unten aufgeführten Links:

**FR** - Pour connaître les tarifs et la disponibilité dans votre pays, cliquez sur l'un des liens suivants:

[RM 805 024](#)

[RM805024](#)

[RM805012](#)

[RM809024](#)

[RM805730](#)

[RM805615](#)

**EN**

This Datasheet is presented by  
the manufacturer

**DE**

Dieses Datenblatt wird vom  
Hersteller bereitgestellt

**FR**

Cette fiche technique est  
présentée par le fabricant