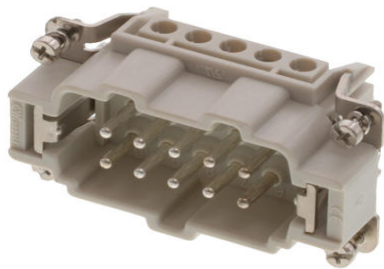




Part Number : [936010238](#)
Product Description : GWconnect Screw Terminal
Insert, Male, 10-Pole, 16A, with Wire Protection, Silver
(Ag) Plated Contacts, Size 10B «57x27»
Series Number : 93601
Status : Active
Product Category : Heavy-Duty Connectors
Engineering Number : 7310.6104.0



Documents & Resources

Product Environment Compliance

Compliance

GADSL/IMDS	Not Relevant
China RoHS	per SJ/T 11365-2006
EU ELV	Not Relevant
Low-Halogen Status	Low-Halogen per IEC 61249-2-21
REACH SVHC	Contains Lead per D(2024)7663-DC (21 Jan 2025)
EU RoHS	Compliant with Exemption 6(c) per EU 2015/863

Compliance Statements

- EU RoHS
- REACH SVHC
- Low-Halogen

Industry Documents

- IPC 1752A Class C
- IPC 1752A Class D
- Molex Product Compliance Declaration
- IEC-62474
- chemSHERPA (xml)

Substances of Interest

- PFAS

Part Details

General

Status	Active
Category	Heavy Duty Connectors
Series	93601
Description	GWconnect Screw Terminal Insert, Male, 10-Pole, 16A, with Wire Protection, Silver (Ag) Plated Contacts, Size 10B «57x27»
Component Type	Inserts - Screw Terminal
Insert Series	S-E
Product Name	GWconnect
Standard	CSA C22.2 NO. 182.3, EN 60664-1, EN 61984, UL 1977
UPC	887191878461

Agency

CSA	256883
UL	E249674

Electrical

Current - Maximum per Contact	16.0A
Voltage - Maximum	500V
Wire Protection	Yes

Physical

Component Size	10B «57X27»
Durability (mating cycles max)	700
Gender	Male
Insert Color	Grey
Material - Contact	Copper Alloy

Material - Insert	Polycarbonate
Material - Plating	Silver
Net Weight	62.000/g
Number of Rows	2
Packaging Type	Bag
Polarized to Mating Part	Yes
Poles	10
Stripping Length	7.00mm
Temperature Range - Operating	-40° to +125°C
Tightening Test Torque	0.50 Nm
Wire Size (AWG)	14-20
Wire Size mm ²	0.50-2.50

Mates With / Use With

Mates with Part(s)

Description	Part Number
GWconnect Screw Terminal Insert, Female, 10-Pole, 16A, with Wire Protection, Silver (Ag) Plated Contacts, Size 10B «57x27»	<u>936010231</u>

Use with Part(s)

Description	Part Number
Use With	Size 10B «57x27» Hoods and Housings