

100C16X01

Allen-Bradley 100C Contactor 7.5kW 3Pole 42VAC Coil 1NC
Contact Auxiliary



CONTACTORS



Allen-Bradley

Component type	Power contactor, AC switching
Range	100C
Model	N/A
Product status	Phased Out

The Allen-Bradley 100-C contactor line offers compact, high-performance design in 9 to 97 A contactors. These energy efficient contactors are designed to control motors and other loads. Straightforward wiring and installation process ensure quick and easy setup, reducing downtime and increasing productivity.

ELECTRICAL

Number of normally open contacts as main contact	3
Number of normally closed contacts as main contact	0
Rated operation current Ie at AC-3, 400 V	16 A
Rated operation power at AC-3, 400 V	7.5 kW
Rated operation current Ie at AC-1, 400 V	32 A
Max. rated operation voltage Ue AC	690 V
Voltage type for actuating	AC
Control supply voltage Us at AC 50HZ	42 V
Number of auxiliary contacts as normally open contact	0
Number of auxiliary contacts as normally closed contact	1
Rated operation current Ie at AC-3, 690 V	9 A
Rated operation power at AC-3, 690 V	7.5 kW
Rated operation power at AC-4, 400 V	4 kW
Control supply voltage Us at AC 60HZ	48 V
Power consumption, AC coil pickup	75 VA
Power consumption, AC coil hold-in	9.5 VA
Type of electrical connection of main circuit	Screw connection
Rated operation current Ie at AC-4, 400 V	9 A

CONSTRUCTION

Degree of protection (IP)	IP20
Mounting method	DIN-rail/screw

DIMENSIONS

Height	81 mm
Width	45 mm
Depth	86.5 mm
Weight	0.39 kg

100C16X01

Allen-Bradley 100C Contactor 7.5kW 3Pole 42VAC Coil 1NC
Contact Auxiliary

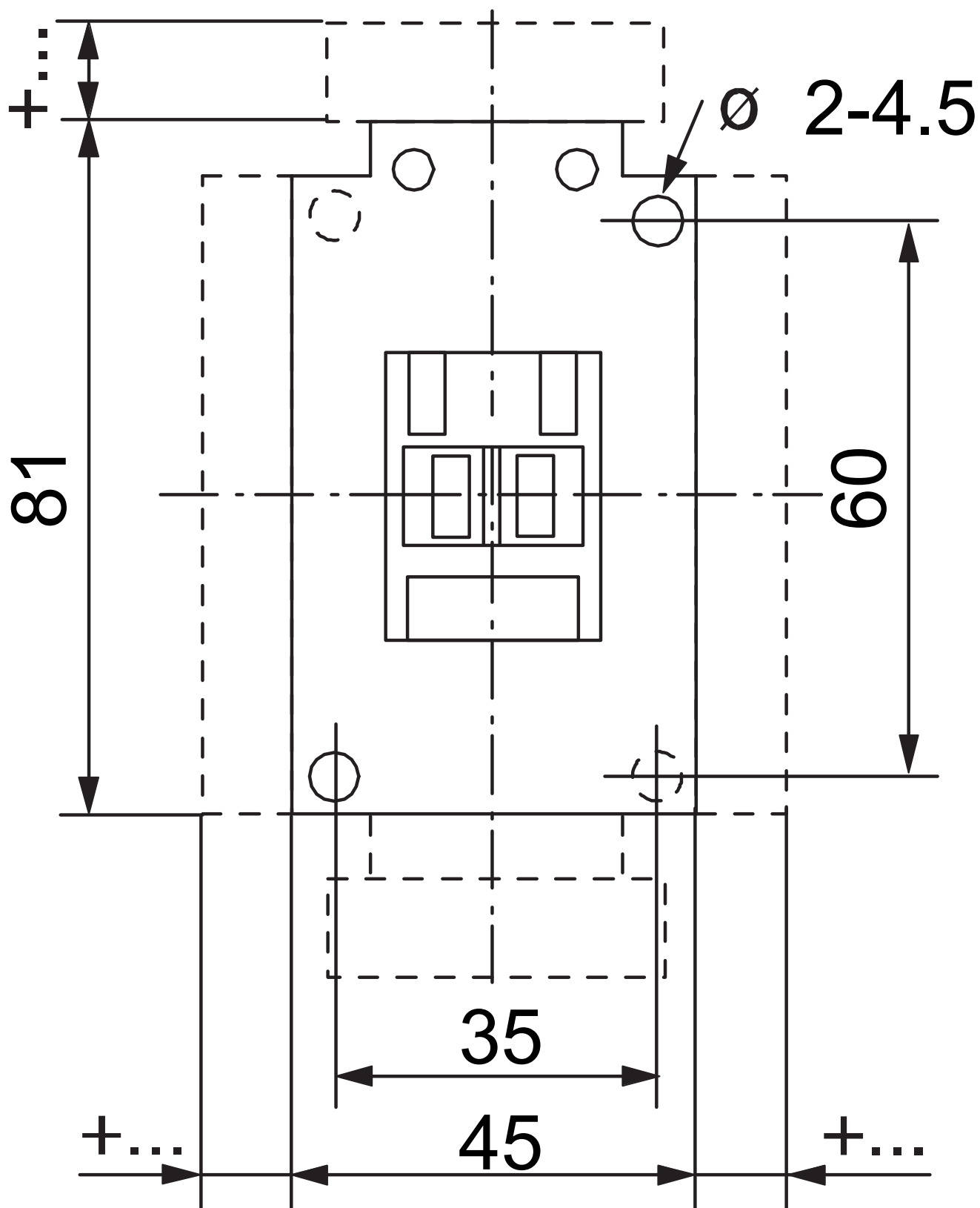


CONTACTORS



Allen-Bradley

DIMENSIONAL DIAGRAM



100C16X01

Allen-Bradley 100C Contactor 7.5kW 3Pole 42VAC Coil 1NC
Contact Auxiliary



CONTACTORS



Allen-Bradley

RELATED PRODUCTS

ACCESSORY



Item No: 140MCPEEC23

Required: No

Description: Allen-Bradley 140M Connecting
Link 140MC to 100C 09 to 23