

# 100C16T01

Allen-Bradley 100C Contactor 7.5kW 3Pole 240VAC Coil 1NC  
Contact Auxiliary



CONTACTORS



Allen-Bradley



Component type	Power contactor, AC switching
Range	100C
Model	N/A
Product status	Existing

The Allen-Bradley 100-C contactor line offers compact, high-performance design in 9 to 97 A contactors. These energy efficient contactors are designed to control motors and other loads. Straightforward wiring and installation process ensure quick and easy setup, reducing downtime and increasing productivity.

## ELECTRICAL

Number of normally open contacts as main contact	3
Number of normally closed contacts as main contact	0
Rated operation current Ie at AC-3, 400 V	16 A
Rated operation power at AC-3, 400 V	7.5 kW
Rated operation current Ie at AC-1, 400 V	32 A
Max. rated operation voltage Ue AC	690 V
Voltage type for actuating	AC
Control supply voltage Us at AC 50HZ	240 V
Number of auxiliary contacts as normally open contact	0
Number of auxiliary contacts as normally closed contact	1
Rated operation current Ie at AC-3, 690 V	9 A
Rated operation power at AC-3, 690 V	7.5 kW
Rated operation power at AC-4, 400 V	4 kW
Control supply voltage Us at AC 60HZ	277 V
Power consumption, AC coil pickup	75 VA
Power consumption, AC coil hold-in	9.5 VA
Type of electrical connection of main circuit	Screw connection
Rated operation current Ie at AC-4, 400 V	9 A

## CONSTRUCTION

IP rating	IP20
Mounting method	DIN-rail/screw

## DIMENSIONS

Height	81 mm
Width	45 mm
Depth	86.5 mm
Weight	0.39 kg

# 100C16T01

Allen-Bradley 100C Contactor 7.5kW 3Pole 240VAC Coil 1NC  
Contact Auxiliary

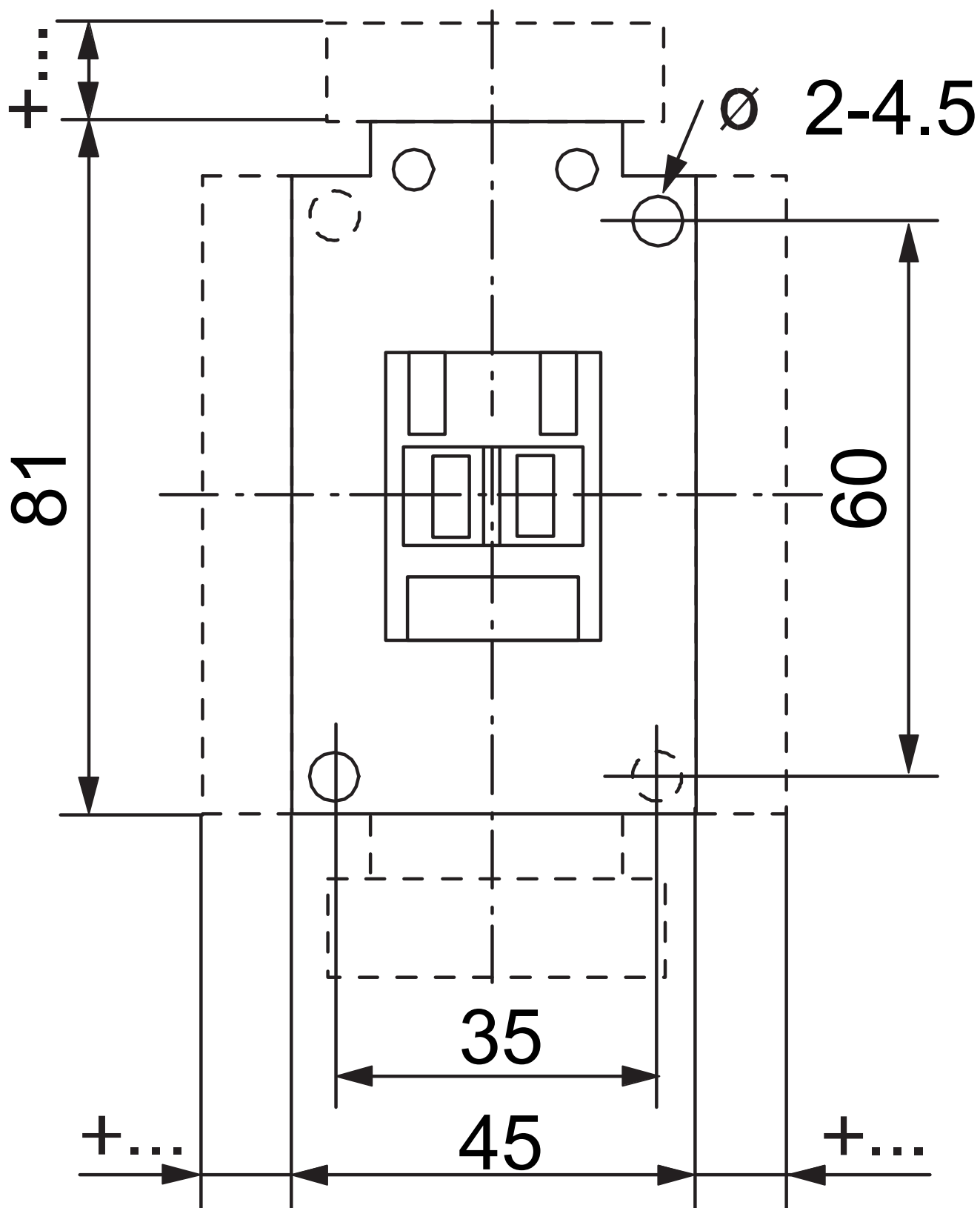


CONTACTORS



**Allen-Bradley**

## DIMENSIONAL DIAGRAM



# 100C16T01

Allen-Bradley 100C Contactor 7.5kW 3Pole 240VAC Coil 1NC  
Contact Auxiliary



CONTACTORS



**Allen-Bradley**

## RELATED PRODUCTS

### ACCESSORY

---



**Item No:** 140MCPE23

**Required:** No

**Description:** Allen-Bradley 140M Connecting  
Link 140MC to 100C 09 to 23