

100C09Y01

Allen-Bradley 100C Contactor 4kW 3Pole 48VAC Coil 1NC
Contact Auxiliary



Allen-Bradley
by ROCKWELL AUTOMATION

CONTACTORS



Component type	Power contactor, AC switching
Range	100C
Model	N/A
Alternative	100E09KJ01

The Allen-Bradley 100-C contactor line offers compact, high-performance design in 9 to 97 A contactors. These energy efficient contactors are designed to control motors and other loads. Straightforward wiring and installation process ensure quick and easy setup, reducing downtime and increasing productivity.

ELECTRICAL

Number of normally open contacts as main contact	3
Number of normally closed contacts as main contact	0
Rated operation current Ie at AC-3, 400 V	9 A
Rated operation power at AC-3, 400 V	4 kW
Rated operation current Ie at AC-1, 400 V	32 A
Max. rated operation voltage Ue AC	690 V
Voltage type for actuating	AC
Control supply voltage Us at AC 50HZ	48 V
Number of auxiliary contacts as normally open contact	0
Number of auxiliary contacts as normally closed contact	1
Rated operation current Ie at AC-3, 690 V	5 A
Rated operation power at AC-3, 690 V	4 kW
Rated operation power at AC-4, 400 V	1.8 kW
Control supply voltage Us at AC 60HZ	55 V
Power consumption, AC coil pickup	75 VA
Power consumption, AC coil hold-in	9.5 VA
Type of electrical connection of main circuit	Screw connection
Rated operation current Ie at AC-4, 400 V	4.3 A

CONSTRUCTION

Degree of protection (IP)	IP20
Mounting method	DIN-rail/screw

DIMENSIONS

Height	81 mm
Width	45 mm
Depth	86.5 mm
Weight	0.39 kg

100C09Y01

Allen-Bradley 100C Contactor 4kW 3Pole 48VAC Coil 1NC
Contact Auxiliary

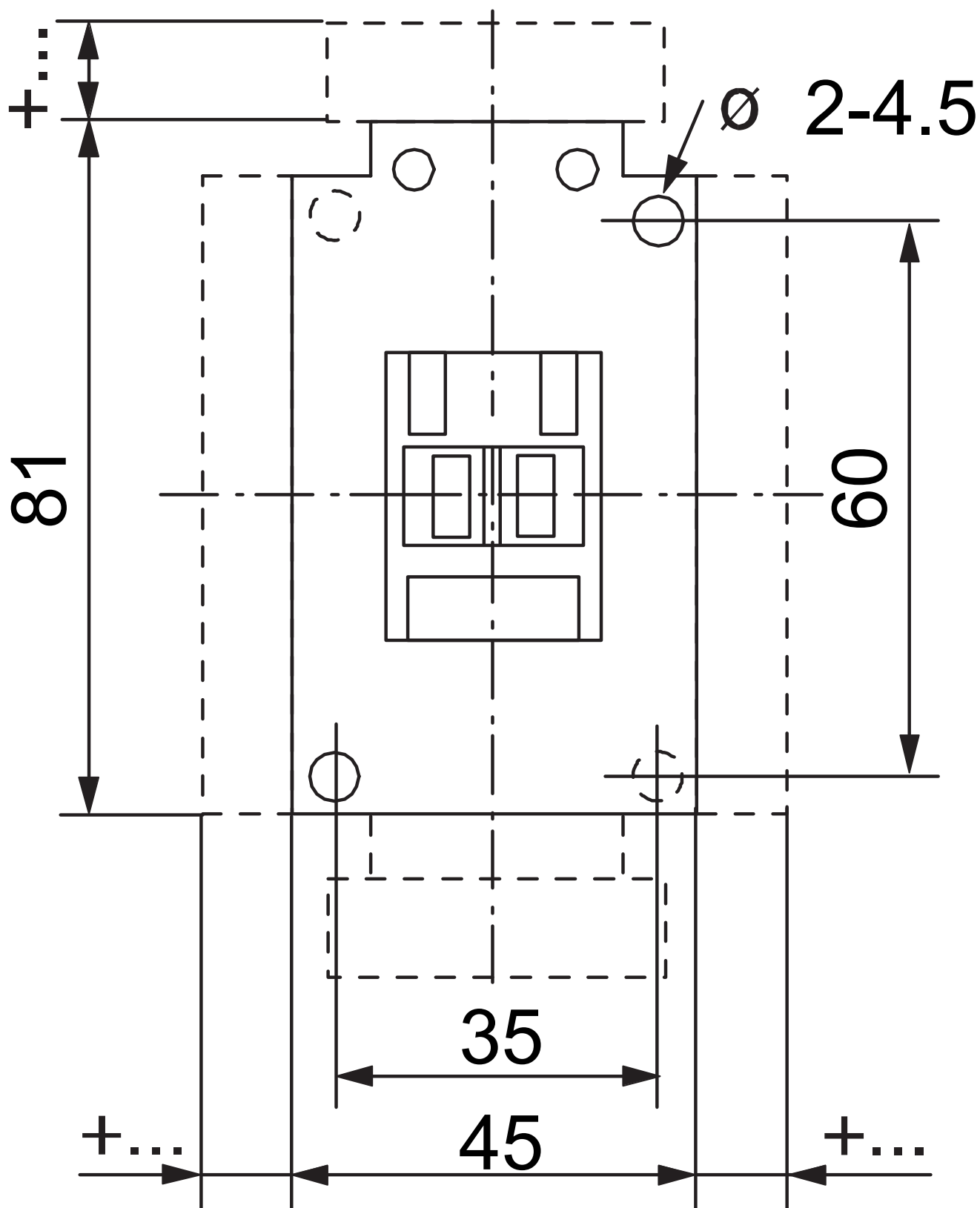


Allen-Bradley

by ROCKWELL AUTOMATION

CONTACTORS

DIMENSIONAL DIAGRAM



100C09Y01

Allen-Bradley 100C Contactor 4kW 3Pole 48VAC Coil 1NC
Contact Auxiliary



Allen-Bradley

by ROCKWELL AUTOMATION

CONTACTORS

RELATED PRODUCTS

ACCESSORY



Item No: 140MCPE23

Required: No

Description: Allen-Bradley 140M Connecting
Link 140MC to 100C 09 to 23