



CONTACTOR, AC-3 5,5 KW/400 V, AC 230 V, 50/60 HZ, 3-POLE,
SIZE S0, SCREW CONNECTION

Figure similar

product brand name	SIRIUS
Product designation	power contactor

General technical data:

Degree of pollution	3
Mechanical service life (switching cycles)	
• of the contactor typical	10 000 000
• of the contactor with added electronics-compatible auxiliary switch block typical	5 000 000
• of the contactor with added auxiliary switch block typical	10 000 000
Protection class IP	
• on the front	IP20
• of the terminal	IP20
Equipment marking	
• acc. to DIN EN 61346-2	Q
• acc. to DIN EN 81346-2	Q

Main circuit:

Number of poles for main current circuit	3
Number of NC contacts for main contacts	0
Number of NO contacts for main contacts	3
Operating current	
• at AC-1	
— at 400 V at ambient temperature 40 °C	40 A
Rated value	

— up to 690 V at ambient temperature 40 °C Rated value	40 A
— up to 690 V at ambient temperature 60 °C Rated value	35 A
• at AC-3 — at 400 V Rated value	12 A
• at AC-4 at 400 V Rated value	12.5 A
Operating current with 1 current path	
• at DC-1 — at 24 V Rated value	35 A
— at 110 V Rated value	4.5 A
• at DC-3 at DC-5 — at 24 V Rated value	20 A
— at 110 V Rated value	2.5 A
Operating current with 2 current paths in series	
• at DC-1 — at 24 V Rated value	35 A
— at 110 V Rated value	35 A
• at DC-3 at DC-5 — at 110 V Rated value	15 A
— at 24 V Rated value	35 A
Operating current with 3 current paths in series	
• at DC-1 — at 24 V Rated value	35 A
— at 110 V Rated value	35 A
• at DC-3 at DC-5 — at 110 V Rated value	35 A
— at 24 V Rated value	35 A
Active power loss at AC-3 at 400 V for rated value of the operating current per conductor	0.5 W
Control circuit/ Control:	
Type of voltage of the control supply voltage	AC
Control supply voltage with AC	
• at 50 Hz Rated value	230 V
• at 60 Hz Rated value	230 V
• Rated value	50 Hz
Control supply voltage frequency 2 Rated value	60 Hz
Operating range factor control supply voltage rated value of the magnet coil with AC	
• at 50 Hz	0.8 ... 1.1
• at 60 Hz	0.85 ... 1.1

Auxiliary circuit:

Number of NC contacts <ul style="list-style-type: none">• for auxiliary contacts<ul style="list-style-type: none">— instantaneous contact	0
Number of NO contacts <ul style="list-style-type: none">• for auxiliary contacts<ul style="list-style-type: none">— instantaneous contact	0
Operating current at AC-15 <ul style="list-style-type: none">• at 230 V Rated value• at 400 V Rated value	6 A 3 A
Contact reliability of the auxiliary contacts	1 faulty switching per 100 million (17 V, 1 mA)

Short-circuit:

Design of the fuse link <ul style="list-style-type: none">• for short-circuit protection of the main circuit<ul style="list-style-type: none">— with type of assignment 1 required— with type of assignment 2 required• for short-circuit protection of the auxiliary switch required	fuse gL/gG: 63 A fuse gL/gG: 25 A fuse gL/gG: 10 A
--	--

Installation/ mounting/ dimensions:

Mounting type <ul style="list-style-type: none">• Side-by-side mounting	screw and snap-on mounting onto 35 mm standard mounting rail according to DIN EN 50022 Yes
Height	85 mm
Width	45 mm
Depth	91 mm
Required spacing <ul style="list-style-type: none">• for grounded parts<ul style="list-style-type: none">— at the side	6 mm

Connections/ Terminals:

Type of electrical connection <ul style="list-style-type: none">• for main current circuit• for auxiliary and control current circuit	screw-type terminals screw-type terminals
Type of connectable conductor cross-section <ul style="list-style-type: none">• for main contacts<ul style="list-style-type: none">— solid— single or multi-stranded— finely stranded with core end processing• for AWG conductors for main contacts• for auxiliary contacts<ul style="list-style-type: none">— solid— finely stranded with core end processing	2x (1 ... 2.5 mm ²), 2x (2.5 ... 6 mm ²), max. 2x 10 mm ² 2x (1 ... 2,5 mm ²), 2x (2,5 ... 6 mm ²), max. 2x 10 mm ² 2x (1 ... 2.5 mm ²), 2x (2.5 ... 6 mm ²) 2x (16 ... 12), 2x (14 ... 10), 1x 8 2x (0.5 ... 1.5 mm ²), 2x (0.75 ... 2.5 mm ²), max. 2x (0.75 ... 4 mm ²) 2x (0.5 ... 1.5 mm ²), 2x (0.75 ... 2.5 mm ²)

- for AWG conductors for auxiliary contacts

2x (20 ... 16), 2x (18 ... 14), 1x 12

Mechanical data:

Size of contactor S0

Ambient conditions:

Installation altitude at height above sea level maximum 2 000 m

Ambient temperature
• during operation -25 ... +60 °C

Certificates/ approvals:

General Product Approval

Functional Safety/Safety of Machinery

Declaration of Conformity



[Type Examination](#)



Test Certificates

Shipping Approval

[Special Test Certificate](#)

[Type Test Certificates/Test Report](#)



Shipping Approval

other



[Environmental Confirmations](#)

[Confirmation](#)

[other](#)

Further information

Information- and Downloadcenter (Catalogs, Brochures,...)

<http://www.siemens.com/industrial-controls/catalogs>

Industry Mall (Online ordering system)

<http://www.siemens.com/industrymall>

Cax online generator

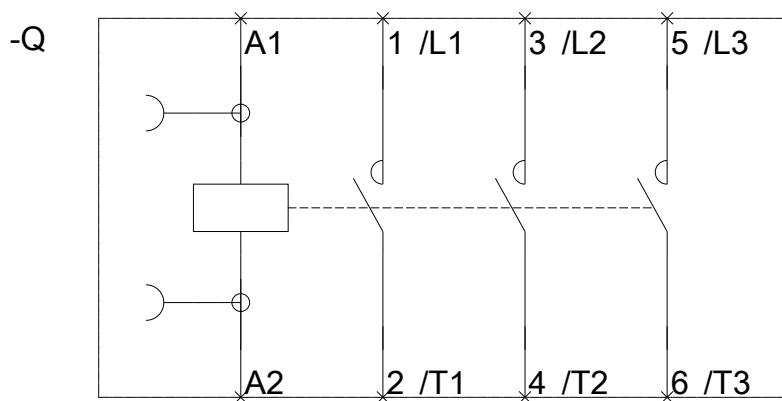
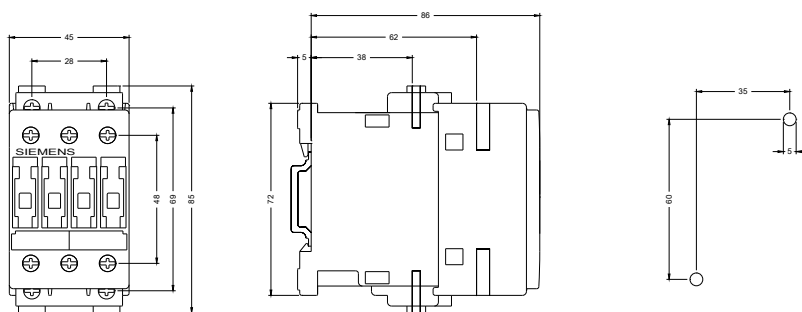
<http://support.automation.siemens.com/WW/CAXorder/default.aspx?lang=en&mlfb=3RT10241AL20>

Service&Support (Manuals, Certificates, Characteristics, FAQs,...)

<https://support.industry.siemens.com/cs/ww/en/ps/3RT10241AL20>

Image database (product images, 2D dimension drawings, 3D models, device circuit diagrams, EPLAN macros, ...)

http://www.automation.siemens.com/bilddb/cax_de.aspx?mlfb=3RT10241AL20&lang=en



last modified:

14.05.2015