

100C23Y10

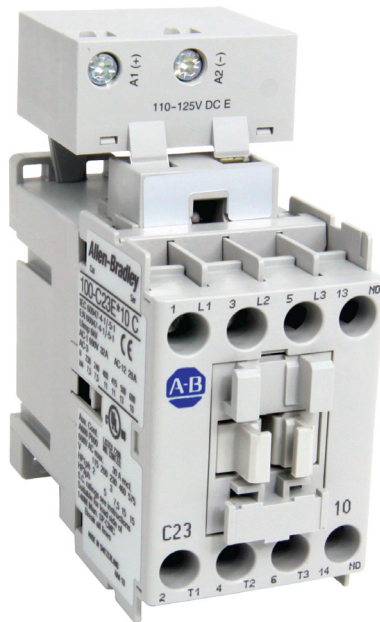
Allen-Bradley 100C Contactor 11kW 3Pole 48VAC Coil 1NO
Contact Auxiliary



Allen-Bradley

by ROCKWELL AUTOMATION

CONTACTORS



| | |
|----------------|-------------------------------|
| Component type | Power contactor, AC switching |
| Range | 100C |
| Model | N/A |
| Product status | Existing |

The Allen-Bradley 100-C contactor line offers compact, high-performance design in 9 to 97 A contactors. These energy efficient contactors are designed to control motors and other loads. Straightforward wiring and installation process ensure quick and easy setup, reducing downtime and increasing productivity.

ELECTRICAL

| | |
|---|------------------|
| Number of normally open contacts as main contact | 3.0 |
| Number of normally closed contacts as main contact | 0.0 |
| Rated operation current I_e at AC-3, 400 V | 23.0 A |
| Rated operation power at AC-3, 400 V | 11.0 kW |
| Rated operation current I_e at AC-1, 400 V | 32.0 A |
| Max. rated operation voltage U_e AC | 690.0 V |
| Voltage type for actuating | AC |
| Control supply voltage U_s at AC 50HZ | 48.0 V |
| Number of auxiliary contacts as normally open contact | 1.0 |
| Number of auxiliary contacts as normally closed contact | 0.0 |
| Rated operation current I_e at AC-3, 690 V | 12.0 A |
| Rated operation power at AC-3, 690 V | 10.0 kW |
| Rated operation power at AC-4, 400 V | 4.0 kW |
| Control supply voltage U_s at AC 60HZ | 55.0 V |
| Power consumption, AC coil pickup | 75.0 VA |
| Power consumption, AC coil hold-in | 9.5 VA |
| Type of electrical connection of main circuit | Screw connection |
| Rated operation current I_e at AC-4, 400 V | 9.0 A |

CONSTRUCTION

| | |
|---------------------------|----------------|
| Degree of protection (IP) | IP20 |
| Mounting method | DIN-rail/screw |

DIMENSIONS

| | |
|--------|---------|
| Height | 81.0 mm |
| Width | 45.0 mm |
| Depth | 86.5 mm |
| Weight | 0.39 kg |

Allen-Bradley 100C Contactor 11kW 3Pole 48VAC Coil 1NO Contact Auxiliary

by ROCKWELL AUTOMATION

CONTACTORS