

100C23KF10

Allen-Bradley 100C Contactor 11kW 3Pole 230VAC 50 and 60Hz
Coil 1NO Contact Auxiliary



CONTACTORS



Allen-Bradley



| | |
|----------------|-------------------------------|
| Component type | Power contactor, AC switching |
| Range | 100C |
| Model | N/A |
| Product status | Existing |

The Allen-Bradley 100-C contactor line offers compact, high-performance design in 9 to 97 A contactors. These energy efficient contactors are designed to control motors and other loads. Straightforward wiring and installation process ensure quick and easy setup, reducing downtime and increasing productivity.

ELECTRICAL

| | |
|---|------------------|
| Number of normally open contacts as main contact | 3 |
| Number of normally closed contacts as main contact | 0 |
| Rated operation current Ie at AC-3, 400 V | 23 A |
| Rated operation power at AC-3, 400 V | 11 kW |
| Rated operation current Ie at AC-1, 400 V | 32 A |
| Max. rated operation voltage Ue AC | 690 V |
| Voltage type for actuating | AC |
| Control supply voltage Us at AC 50HZ | 230 V |
| Number of auxiliary contacts as normally open contact | 1 |
| Number of auxiliary contacts as normally closed contact | 0 |
| Rated operation current Ie at AC-3, 690 V | 12 A |
| Rated operation power at AC-3, 690 V | 10 kW |
| Rated operation power at AC-4, 400 V | 4 kW |
| Control supply voltage Us at AC 60HZ | 230 V |
| Power consumption, AC coil pickup | 75 VA |
| Power consumption, AC coil hold-in | 9.5 VA |
| Type of electrical connection of main circuit | Screw connection |
| Rated operation current Ie at AC-4, 400 V | 9 A |

CONSTRUCTION

| | |
|-----------------|----------------|
| IP rating | IP20 |
| Mounting method | DIN-rail/screw |

DIMENSIONS

| | |
|--------|---------|
| Height | 81 mm |
| Width | 45 mm |
| Depth | 86.5 mm |
| Weight | 0.39 kg |

100C23KF10

Allen-Bradley 100C Contactor 11kW 3Pole 230VAC 50 and 60Hz
Coil 1NO Contact Auxiliary

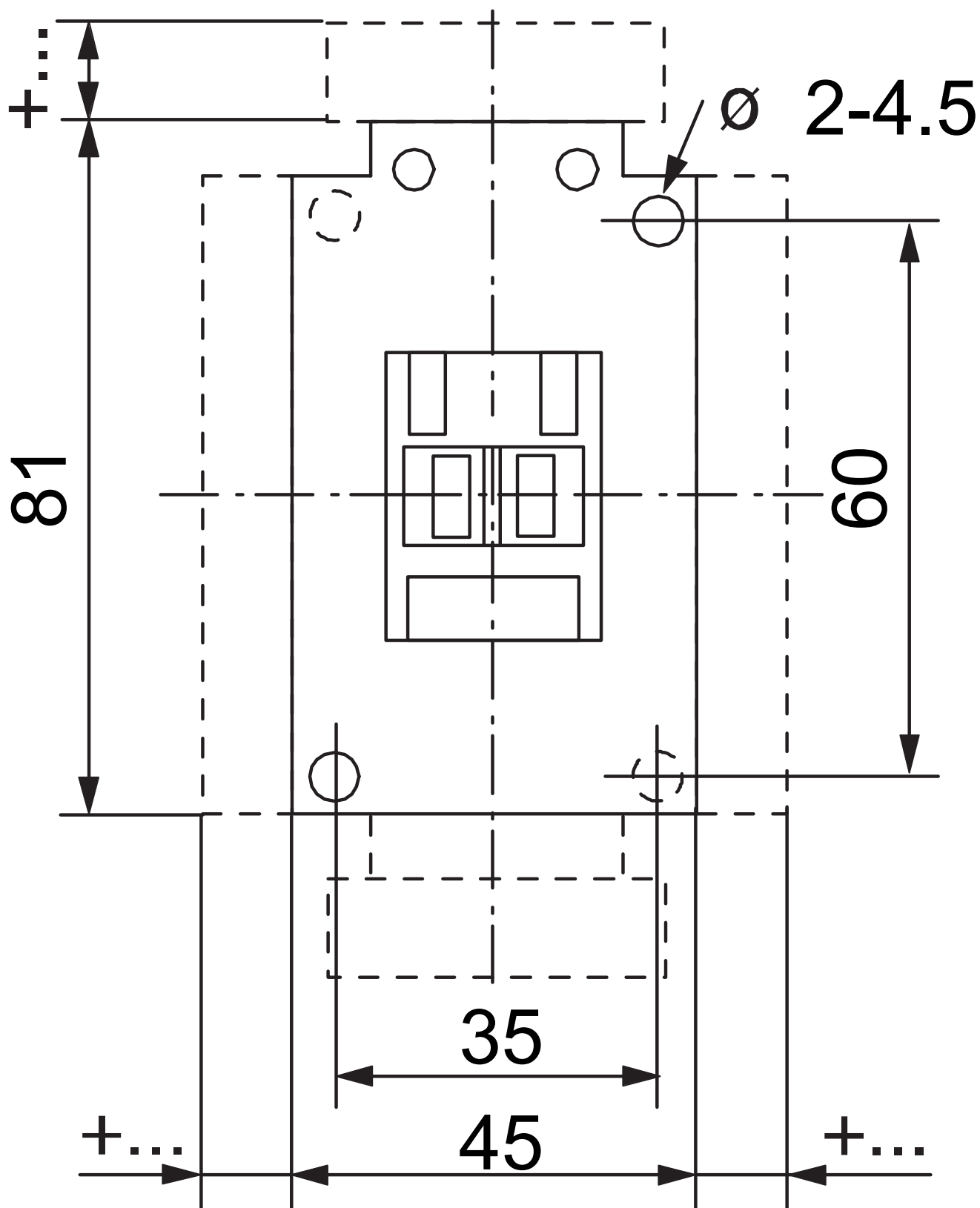


CONTACTORS



Allen-Bradley

DIMENSIONAL DIAGRAM



100C23KF10

Allen-Bradley 100C Contactor 11kW 3Pole 230VAC 50 and 60Hz
Coil 1NO Contact Auxiliary



CONTACTORS



Allen-Bradley

RELATED PRODUCTS

ACCESSORY



Item No: 140MCPEEC23

Required: No

Description: Allen-Bradley 140M Connecting
Link 140MC to 100C 09 to 23